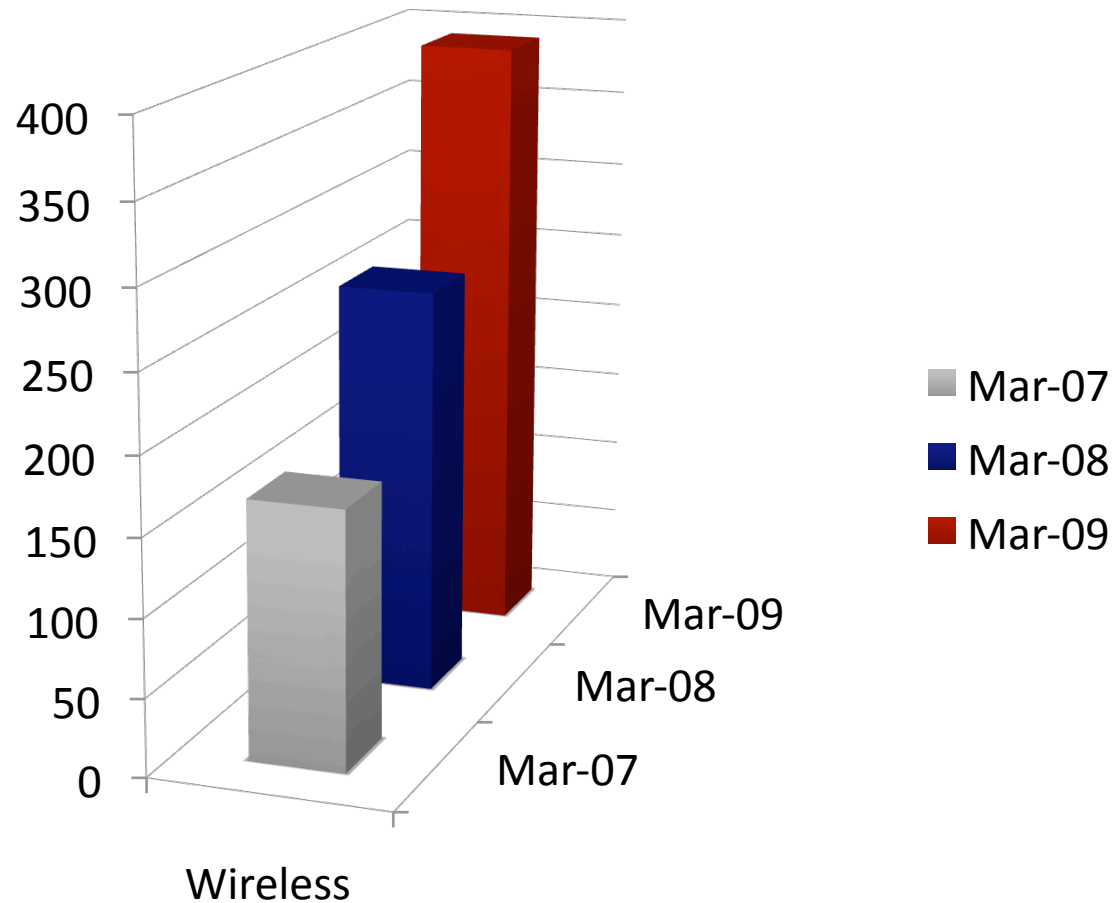


Telecom Regulatory Authority of India

Connections Analysis as at 31 March 2009



The Telecom Regulator Authority of India (*TRAI*) recently released the statistics relating to Wireless subscribers (*GSM, CDMA, WLL(F)*) as at the end of March 2009.

The total number of subscribers stood at 391.76 million as at the end of March. A total of 15.64 million wireless subscribers were added during March, as against 13.82 million subscribers added during the month of February 2009.

Year on Year the Wireless Sector has grown as follows :

- March 2007 : 165.11 Million Subscribers
- March 2008 : 261.09 Million Subscribers
- March 2009 : 391.76 Million Subscribers

Important Notice

Disclaimer

Information that has been prepared in this Work Book has been done so by Lincoln Crowne & Company in good faith based on information sourced from a variety of information points including public data, government data, company published information and third party data sources such as FACTSET, MDS News and various news media outlets.

Whilst it is believed that the information is accurate at the date of publication, no responsibility will be accepted in any way from any party seeking to rely upon this information for any business or investment decision. The information has been provided by way of background research only, and given its content is subject to continual change in fluctuating markets